



NTPL/POL

SANTA'S WORKSHOP INTL

JEPPESEN

12-25

25 DEC 13
24 Dec 2013

NORTH POLE VILLAGE

RNAV (GPS) Rwy 18

ARCTIC Center

NORTH POLE Approach

WORKSHOP Traffic

122.8

122.8 when ELFCOM inop.

122.8 when ELFCOM inop.

RLS
(Reindeer
Landing System)

Final
Aptch Crs
360°T

Minimum Alt
CLAUS
2500' (2450')

RLS
DA(H)
(CONDITIONAL)
250' (200')

Apt Elev **50'**
Rwy 18 **50'**

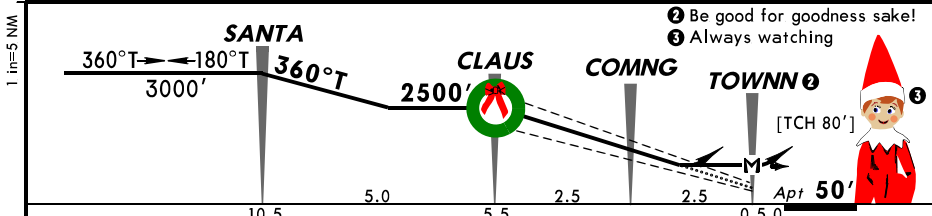
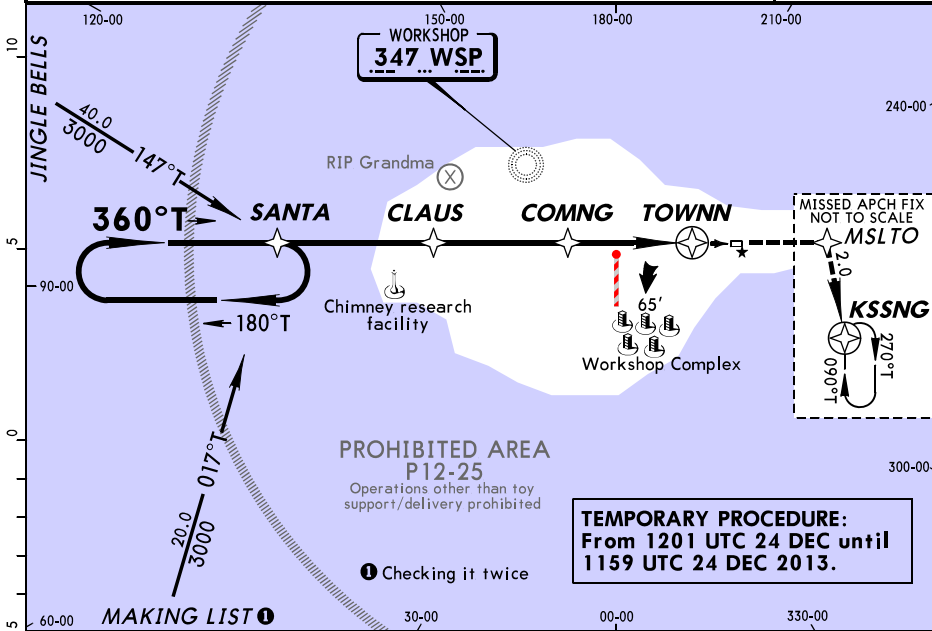
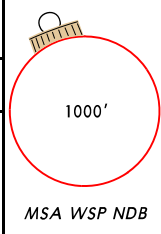
MISSED APCH: Climb to 2500' direct MSLTO, then RIGHT turn direct KSSNG and hold.

Alt Set: INCHES Trans level: FL 180 Trans alt: 18000'

CAUTION: Departures may be illuminated by blinding red nose.

CAUTION: Supersonic heavy departures; non-sleigh traffic discouraged.

1. Reindeer practice flights near-round. 2. Flights in the vicinity may be conducted under the influence of egg nog. 3. No unapproved winter operations. 4. Postal flights with letters to Santa receive priority sequencing. 5. Reindeer and Elves on and in vicinity of runway. 6. Runway does not maintain stationary location.



- Be good for goodness sake!
- Always watching



| | | | | | | | | | | |
|----------------------------|--------|-----|-----|-----|-----|------|---------------------------|-------|---|-------|
| Speed (Reindeer operating) | 4 | 5 | 6 | 7 | 8 | 9 | SALS TINSEL TWINKLE | 2500' | D | MSLTO |
| Glide Path Angle | [7.0°] | N/A | N/A | 800 | 998 | 1140 | | | | |
| MAP at TOWNN | | | | | | | | | | |

If Dasher sick, reduce speed by 2 reindeer

| MERRY OPS | STRAIGHT-IN LANDING RWY 18 | | | | | | LOC | | CIRCLE-TO-LAND | | |
|-----------|----------------------------|---------------------------|--|------------------------|------------------------|---|------------------------|--|-----------------|---|---------------------|
| | RLS DA(H) 250' (200') | | LOC (Rudolph Out) DA(H) 400' (350') | | | 2 or more reindeer inop MDA(H) 500' (450') | | Authorized only when Rudolph available | | | |
| | FULL | TINSEL out TWINKLE out | TINSEL out | TINSEL/ TWINKLE out | TINSEL/ TWINKLE out | TINSEL out | TINSEL/ TWINKLE out | Rdr in Svc | MDA(H) | | |
| 6 | | | | | | | | 6 | 750' (700') - 2 | | |
| 7 | RVR 0 | RVR 40 or 3/4 | RVR 50 or 1 | RVR 40 or 3/4 | RVR 50 or 1 | RVR 60 or 1 1/4 | 1 | 1 1/4 | 2 | 7 | 650' (600') - 1 1/2 |
| 8 | | | | | | | | | | 8 | 550' (500') - 1 |
| 9 | | | | | | | | | | 9 | 450' (400') - 1 |

CHANGES: Noel procedure.

© JEPPESEN, 2013. ALL RIGHTS RESERVED.

Naughty/Nice List Last Minute Changes

It's never too late!

| <i>NICE</i> | Code | <i>NAUGHTY</i> | Code |
|-------------|------|----------------|------|
| | | | |

Nice behavior change codes:

- 01 - Cleaning up room on own
- 02 - Helping parents
- 03 - Walking old lady across street
- 04 - Giving something to someone in need
- 05 - Cooperating with parents

Naughty behavior change codes:

- 11 - Not listening to parents
- 12 - Peeking at/snooping for gifts
- 13 - Mean to brother/sister
- 14 - Not following rules
- 15 - Misbehavior in school
- 16 - Taking things that don't belong to him/her

- 06 - Cooperating with brothers/sisters
- 07 - Helping with pets
- 08 - Helping in kitchen/with meals
- 09 - Being nice
- 10 - Other

- 17 - Getting into or stealing others belongings
- 18 - Vandalism/throwing rocks
- 19 - Being a hellion
- 20 - Talking to strangers
- 21 - Telling lies
- 22 - Other



NTPL/POL
 Apt Elev **50'**
 N 90.0 W 0.0

JEPPESEN

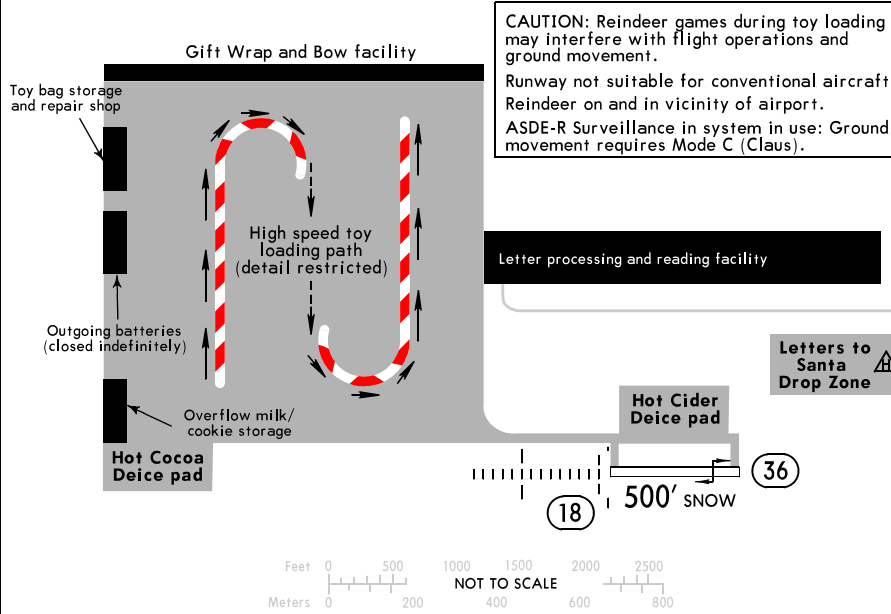
25 DEC 13
 24 Dec 12017 (12-25)

NORTH POLE VILLAGE
SANTA'S WORKSHOP INTL

WORKSHOP Traffic
122.8 when ELFCOM inop.

NORTH POLE Approach
122.8 when ELFCOM inop.

ARCTIC Center
122.8



ADDITIONAL RUNWAY INFORMATION

| RWY | REMARKS | USABLE LENGTHS | | TAKE-OFF | WIDTH |
|------------|---|----------------|--------------|----------|-------------|
| | | Threshold | Glide Slope | | |
| 09 ① 27 | RL ② TINSEL ② TWINKLE SALS Reindeer vis Range (RVR) | 500' | 450' 500' | 500' | 100' 33m |

- ① Only hoof brakes permitted on runway.
 - ② Illuminated Dec 1 - Dec 31 annually.
- Decorated trees at both ends of Rwy may be mistaken for Rwy lighting.

| TAKE-OFF | | FOR FILING AS ALTERNATE | |
|--------------------------|-------------------------------|-------------------------|-------|
| Rwy 18 | | RNAV (GPS) Rwy 18 | Other |
| Adequate Red Nose Illum. | Under-the-weather Nose Illum. | | |
| RVR 0 | RVR 12 | 800-2 | NA |
| | RVR 7 | | |
| | | | |

'Twas the night before Christmas and all 'round the field
 Santa's helpers were carrying all they could wield
 'Twas time to pitch in and load up the sleigh
 With every possible gift for work and for play
 "All hands to your stations" Santa did say
 "For it's almost time for the biggest of days"
 The day of the year and the fruit of our work
 Is almost upon us, so there's no time for a quirk
 The manifest lists the destination of each toy
 The fastest of sleds bound for each girl and boy
 As the takeoff begins, the sleigh starts to scream
 To deliver the toys as the children do dream
 Back at the pole, a big collective sigh
 The hard work is over, save for the big guy
 He's good at it though, it's not his first jaunt
 Bringing the toys you told him you want



Letter and Wish List to Santa Claus

This year I have been:

Naughty

Nice

Dear Santa Claus,

Thank you,

Christmas List

For Workshop use only:

Received on: _____

Orders sent to elves: _____

Naughty/nice checked by: _____